

KVF-1750W

17" 1RU PULL-OUT RACKMOUNT MONITOR



KVF-1750W is an innovative, full-feature 17" rackmount LCD monitor that offers superb picture quality. With its foldable frame and pull-out drawer, this monitor occupies just 1RU of space when it's housed. It's the perfect studio monitor for applications where space is constrained, e.g. newsrooms, control rooms, post-production facilities, production trucks, in the field, and other applications.

Features

Multi Signal Formats

3G/HD/SD-SDI auto detected
2×SDI inputs,
2×SDI outputs,
HDMI/DVI/VGA, Video,
Component inputs, etc

Convenient Buttons



Multi functional control buttons for easy operation

Foldable Frame



Foldable frame and pull-out drawer, this monitor occupies just 1RU of space when it's housed.

Pixel Measurement

Select any single pixel or block of pixels using a movable crosshair to obtain real time readouts of the YRGB values for that position to get real time YRGB measurement values and compare them

Measure	Line	Sample	Y	R	G	B	Diff	Diff	Diff
Current	0100	0100	0110	010	0171	0471	150	151	112
Ref. pos	0100	0100	0100	010	0100	0100	150	150	100
Diff			0107	-012	0070	-0034	001	022	1087

Waveform & Vector & Histogram

Waveform, Full Scale Waveform (waveform alarm support)
Vectorscope, (RGB) Histogram
All display on screen at same time

PIP/PBP Mode

Support 2 SDI signals display at same time, also one SDI with any other signals of Video, HDMI/DVI/VGA. Two pictures can freely swap between each other



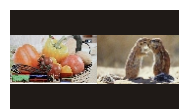
Full Scale Waveform



Waveform, Vectorscope, Histogram



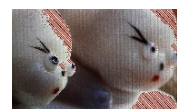
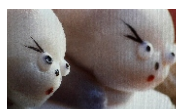
PIP



PBP

Zebra

Zebra is to display the overexposed areas of the image with zebra stripes, aid the camera operator to control the luminance, in order to avoid over exposure.



Part Zoom In

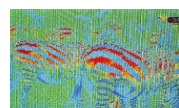
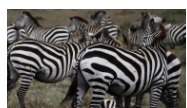
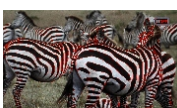
Part zoom in function aims to show image details more clearly. Combining focus assist will be more helpful for accurate focus.



False Signal

Focus Assist

The silhouettes of objects in the picture will be emphasized, to assist you to focus manually more easily



False Color

This function is to aid in the setting of camera exposure for over expose, under expose and proper expose

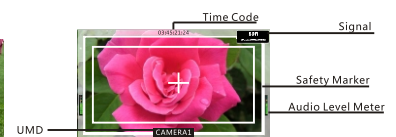
Picture Flip

Horizontal picture flip function allows negative image, is very useful in the studios/virtual studios, such as weather forecast, news and other programs, etc.

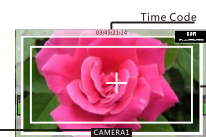


Markers & Time Code

Safety Marker, UMD, Audio Level Meter, Time Code



UMD



Time Code

Signal

Safety Marker

Audio Level Meter

Specifications

LCD	
Display Size	17"
Resolution	Full HD 1920×1080
Aspect Ratio	16:9
Viewing Angle	178°(H) / 178°(V)
Pixel Pitch	0.199×0.199(mm)
Color Depth	1.073G(True 10bit)
Response time	5ms
Back Light	LED
Brightness	300cd/m ²
Contrast Ratio	1000:1
INPUT	
2 × BNC	SDI1/2 Channel Input (3G/HD/SD-SDI Auto-Detected)
3 × BNC	YPbPr/YCbCr/RGB/Video/Y/C
1 × HDMI/DVI/VGA	HDMI/DVI/VGA Input
OUTPUT	
2 × BNC	SDI1/2 Channel Output (3G/HD/SD-SDI Auto-Detected)
1 × BNC	Video
COMPATIBLE SDI FORMATS	
SMPTE-425M	1080P(60/59.94/50)
SMPTE-274M	1080i(60/59.94/50)
	1080P(30/29.97/24/25/23.98)
SMPTE-296M	720P(60/59.94/50/30/29.97/25/24/23.98)
SMPTE-260M	1035i(60/59.94)
SMPTE-125M	480i(59.94)
ITU-R BT. 656	576i(50)
Audio In / Out	
SDI Audio In	8 Channel Embedded Audio
Audio Meter Display	H/V Audio Level Meter Display(VU+PPM)
Analog Audio Input	3.5mm Headset Switch Cable
Audio Headset Output	3.5mm Headset Jack
Built-in Speaker	2.5W×2
GENERAL	
Operating Temperature	-10° ~ 50°
Input Voltage	DC12V
Power Consumption	30W
Power-Saving Mode	Turn off unimportant Key Automatically if No Signal Input
Net/Gross Weight	8.9KG / 10.66KG
Accessory	Power Adaptor

⚠Specifications may be changed without prior notice.

SHENZHEN KONVISION TECHNOLOGY CO., LTD

Add: 5/F, Block 1, Zong He Building, Liuxian 1st Road, 71 Zone, Bao'an District, Shenzhen, China.518133

Tel:+86-755-82716021,82924800 Fax:+86-755-61640952

Email: :sales@konvision.com Web: www.konvision.com