

1920x1080 Native Resolution
3G/HD-SDI, HDMI/DVI/VGA, Composite & Component

KVM-2260W **New**

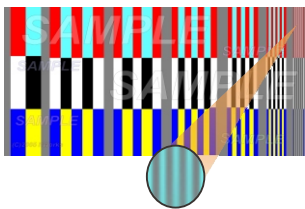


The KVM-2260W is a versatile monitor that supports full video formats including 3Gbs SDI 4:4:4 signals and professional features. Utilizing the IPS LCD panel and combined with excellent video processing technology, it provides outstanding accurate colors and rich professional features.

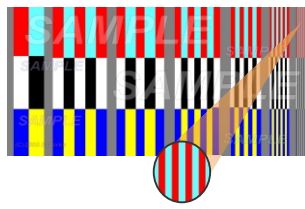
| Main Features

Advance processing technology

High-end video processing engine ensures clear and smooth picture quality. e.g. Feed professional chroma burst testing signals, the right top side slim red lines should be same the left side thick red lines, and clear display.



Other monitors:
the slim red lines turn to gray color wrongly, also flickering and blurred display.



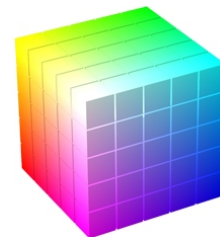
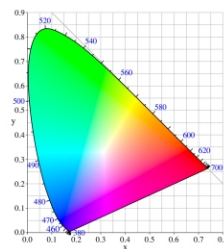
Konvision monitors:
same red color well and clear display.

Support 3Gbs SDI 4:4:4 12bit (SMPTE 425M-AB) signals

Feed full bandwidth 4:4:4 original video signal without chroma subsampling, providing uncompressed image as a platinum standard for color, unprecedented picture quality.

Accurate color reproduction

IPS LCD Panel, excellent color calibration technology, color temperature adjustment, all of these benefit Konvision monitors with accurate and standardized color reproduction.



Non-linear editing (NLE) network system application

With PIP/PBP function and waveform, KVM-2260W is an advanced all-in-one choice for Non-linear editing (NLE) network system configuration:

Traditional NLE network system configuration:

- 1 PC Monitor, checking software running
- 1 LCD monitor, checking program preview
- 1 Waveform monitor, Program quality monitoring



1 unit
KVM-2260W
Display SDI and PC signals
On the same screen

Multi Signal Formats

Support all signal sources
HDMI/DVI/VGA Input,
Composite, Video,
Component,S Video Input
and Output



2 SDI Inputs&Outputs

2x SDI Inputs
2x SDI Outputs
3G/HD/SD-SDI Auto
detected



More Features

Embedded Audio Meter, UMD, Blue only/Mono, Fast Mode,
Full scan/Overscan, 1:1 pixing to pixel mapping, H/V Delay, Zoom,
Markers, Tally indicator.

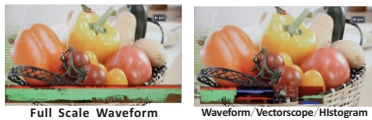
Convenient Buttons&Knobs



Multi functional control buttons and
navigation turning knobs for easy
operation

Waveform& Vector&Histogram

Waveform, Full Scale Waveform
(waveform alarm support),
Vectorscope, Histogram & RGB
Histogram all display on screen at same
time



Part Zoom In

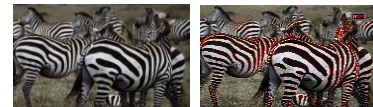
Part zoom in function aims to show
image details more clearly. Combining
focus assist and part zoom in functions
will be more helpful for accurate focus.



False Signal

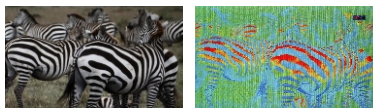
Focus Assist

The silhouettes of objects in the
picture will be emphasized, to assist
you to focus manually more easily



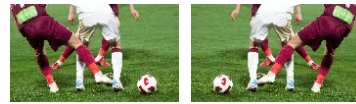
False Color

This function is to aid in the setting of
camera exposure for over expose,
under expose and proper expose.



Picture Flip

Horizontal picture flip function
allows negative image, is very useful
in the studios/virtual studios, such as
weather forecast, news and other
programs, etc.



PIP/PBP Mode

Support 2 SDI signals display at same
time, also one SDI with any other
signals of Video, HDMI/DVI/VGA.
Two pictures can freely swap
between each other



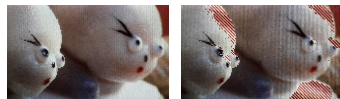
Pixel Measurement

Select any single pixel or block of
pixels using a movable crosshair to
obtain real time readouts of the
YRGB values for that position to get
real time YRGB measurement values
and compare them

Measure	Size	Sample	Y	Pb	Pr	G	B	R	G	B
Current	0020	0000	0020	000	0000	0000	0000	0000	000	000
Max/min	0020	0000	0000	000	0000	0000	0000	0000	000	000

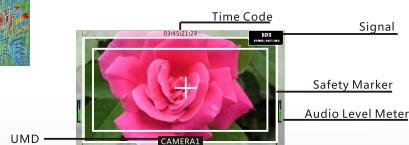
Zebra

To appear over areas of the picture
that are over exposed (too bright)



Various Markers& Time Code

Safety Marker, UMD, Audio Level
Meter, Time Code



Specifications

LCD	
Display Size	21.5"
Resolution	Full HD 1920x1080
Aspect Ratio	16:9
Viewing Angle	178°(H) / 178°(V)
Pixel Pitch	0.248x0.248(mm)
Color Depth	16.7M
Response time	5ms
Back Light	LED
Brightness	300cd/m2
Contrast Ratio	1000:1

INPUT	
2 x BNC	SDI1/2 Channel Input (3G/HD/SD-SDI Auto-Detected)
3 x BNC	YPbPr/YCbCr/RGB
2 x BNC	Y/C
1 x BNC	Video
1 x HDMI/DVI/VGA	HDMI/DVI/VGA Input
OUTPUT	
2 x BNC	SDI1/2 Channel Output (3G/HD/SD-SDI Auto-Detected)
2 x BNC	Y/C
3 x BNC	YPbPr/YCbCr/RGB
1 x BNC	Video

COMPATIBLE SDI FORMATS		
SMPTE-425M-A/B	4:2:2 YCbCr 10-bit	1080P(60/59.94/50)
	4:4:4 YCbCr/RGB 10-bit	1080i(60/59.94/50)
	4:4:4 YCbCr/RGB 12-bit	1080p(30/29.97/25/24/23.98/30sF/29.97sF/25sF/24sF/23.98sF)
	4:2:2 YCbCr 12-bit	1080i(60/59.94/50)
SMPTE-274M	4:4:4 YCbCr/RGB 10-bit	1080p(30/29.97/25/24/23.98/30sF/29.97sF/25sF/24sF/23.98sF)
	4:4:4 YCbCr/RGB 10-bit	720P(60/59.94/50/30/29.97/25/24/23.98)
SMPTE-274M	1080i(60/59.94/50)	1080P(30/29.97/24/25/23.9830sF/29.97sF/25sF/24sF/23.98sF)
SMPTE-296M	720P(60/59.94/50/30/29.97/25/24/23.98)	
SMPTE-260M	1035i(60/59.94)	
SMPTE-125M	480i(59.94)	
ITU-R BT. 656	576i(50)	

Audio In / Out	
SDI Audio In	8 Channel Embedded Audio
Audio Meter Display	H/V Audio Level Meter Display(VU+PPM)
Analog Audio Input	3.5mm Headset Switch Cable
Audio Headset Output	3.5mm Headset Jack
Built-in Speaker	2.5Wx2

GENERAL	
Operating Temperature	-10° ~ 50°
Input Voltage	AC 100-240V 50/60Hz
Power Consumption	33W
Power-Saving Mode	Turn off unimportant key Automatically if no signal input
Unit/Packing Dimension	530x350x54(mm) / 655x221x500(mm)
Net/Gross Weight	7.0KG / 9.0KG
VESA Installation	ESA MIS-D(100X100mm)
Shell Materials	Aluminum on Front-Shell/Base Supporter
	Rust-Proof iron on Back-Shell
Accessory	Power Cord /Desktop stand

※Specifications may be changed without prior notice.

SHENZHEN KONVISION TECHNOLOGY CO., LTD

Add: 5/F, Block 1, Zong He Building, Liuxian 1st Road, 71 Zone, Bao'an District, Shenzhen, China.518133

Tel:+86-755-82716021,82924800 Fax:+86-755-61640952

Email: :sales@konvision.com Web: www. konvision. com

©KONVISION. All rights reserved.