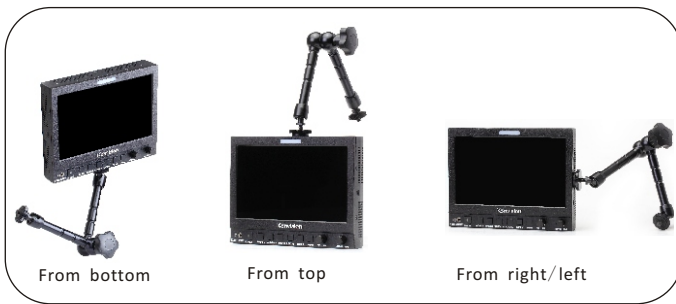


## 7" Full Featured On-camera Monitor 3G/HD-SDI, HDMI, Composite & Component

# KVM-7050W



- 7" 1024x600 Resolution
- Wide Viewing Angle 170°(H)/170°(V)
- 3G/HD/SD-SDI Input&Loop through
- Composite&Component Input
- HDMI Input
- Waveform/Vectorscope/Histogram
- Focus Assist/×9 Zoom In
- False Color/Zebra
- DSLR Scaling
- PIP/PBP
- Pixel Measurement
- H Flip
- Blue Only/Mono
- UMD Support
- 8ch Embedded Audio Meter(H/V)
- Full scan / Over Scan
- Various Markers
- RS-232 Remote Control/GPI
- Wide range DC 6.5V-25V
- Easy operating
- Aluminum cover solid design, light weight
- Camera mounting on all sides
- Tally

## Features

### Multi Signal Formats

2×SDI inputs and 1×SDI out  
3G/HD/SD-SDI Auto detect,  
Composit, Component,  
S-Video input



### HDMI Input Support

HDMI Input, Analogue  
audio input and RS232  
for remote control and  
software upgrade



### Convenient Buttons&Knobs

Multi functional control buttons and  
navigation turning knobs for easy  
operation



### Battery Power Support

Replaceable battery  
plate: V-mount, Anton  
Bauer, also DV type  
plates (SONY  
F970, Panasonic, Canon)



### Waveform & Vector & Histogram

Waveform, Full Scale Waveform  
(waveform alarm support),  
Vectorscope, Histogram & RGB  
Histogram all display on screen at  
same time



Full Scale Waveform



Waveform, Vectorscope, Histogram

### Pixel Measurement

Select any single pixel or block of  
pixels using a movable crosshair to  
obtain real time readouts of the  
YRGB values for that position to get  
real time YRGB measurement  
values and compare them

Measure	Unit	Sample	Y	R	G	B	DC	SDS	SDS	SDS
Current	0.020	0.000	0.111	0.05	0.071	0.071	1.0	1.0	1.0	1.0
Max. min	0.000	0.011	0.02	0.000	0.020	1.00	1.00	1.00	1.00	1.00
Diff			-0.007	-0.12	0.044	-0.044	0.00	-0.22	-0.47	

### PIP/PBP Mode

Support PIP/PBP for one SDI with any  
other signal of Video/Component/  
HDMI.

And the two pictures can freely  
swap between each other



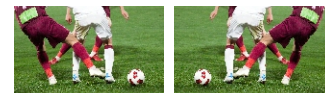
PIP



PBP

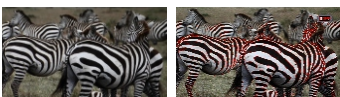
### Picture Flip

Horizontal picture flip function  
allows negative image, is very  
useful in the studios/virtual  
studios, such as weather  
forecast, news and other  
programs, etc.



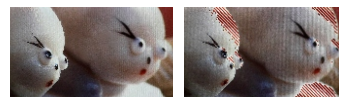
### Focus Assist

The silhouettes of objects in the  
picture will be emphasized, to assist  
you to focus manually more easily



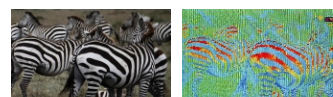
### Zebra

To appear over areas of the picture  
that are over exposed (too bright)



### False Color

This function is to aid in the setting of  
camera exposure for over expose,  
under expose and proper expose



### Part Zoom In

Aims to show image details more  
clearly. Combining focus assist  
and part zoom in functions will be  
more helpful for accurate focus.



## Specifications

LCD	
Display Size	7"
Resolution	1024×768
Aspect Ratio	16:9
Viewing Angle	170°(H) / 170°(V)
Pixel Pitch	0.059×0.15(mm)
Color Depth	16.7M
Response time	18ms
Back Light	LED
Brightness	400cd/m <sup>2</sup>
Contrast Ratio	800:1
INPUT	
2 × BNC	SDI1/2 Channel Input (3G/HD/SD-SDI Auto-Detected)
3 × BNC	YPbPr/Video/Y/C
1 × HDMI	HDMI Input
OUTPUT	
2 × BNC	SDI1/2 Channel Output (3G/HD/SD-SDI Auto-Detected)
COMPATIBLE SDI FORMATS	
SMPTE-425M	1080P(60/59.94/50)
SMPTE-274M	1080i(60/59.94/50)
	1080P(30/29.97/24/25/23.98)
SMPTE-296M	720P(60/59.94/50/30/29.97/25/24/23.98)
SMPTE-260M	1035i(60/59.94)
SMPTE-125M	480i(59.94)
ITU-R BT. 656	576i(50)
Audio In / Out	
SDI Audio In	8 Channel Embedded Audio
Audio Meter Display	H/V Audio Level Meter Display(VU+PPM)
Analog Audio Input	3.5mm Headset Switch Cable
Audio Headset Output	3.5mm Headset Jack
Built-in Speaker	2.5W×2
GENERAL	
Operating Temperature	-10° ~ 50°
Input Voltage	DC6.5-25V
Power Consumption	10W
Power-Saving Mode	Turn off unimportant Key Automatically if No Signal Input
Net/Gross Weight	1.0KG / 2.6KG
Accessory	Power Adaptor/Carrying Bag /Sunhood
Optional	DV/V-mount/AB battery mount/Magic arm/D-Tap Cable/Carry Case

※Specifications may be changed without prior notice.

SHENZHEN KONVISION TECHNOLOGY CO., LTD

Add: 5/F, Block 1, Zong He Building, Liuxian 1st Road, 71 Zone, Bao'an District, Shenzhen, China.518133

Tel:+86-755-82716021,82924800 Fax:+86-755-61640952

Email: :sales@konvision.com Web: www. konvision. com

©KONVISION. All rights reserved.